



## FREYA MEDIUM PULL ROSE QUARTZ (FKM532)



The Freya is an instant classic in rock crystal or horn. Hand-carved into a hexagonal shape and double-terminated with two soft points, each pull is banded in metal with an angular stanchion for an elegant and modern look. The Freya is designed to be used vertically or horizontally, and the mounting stanchions are also field-adjustable for perfect placement on pre-existing mounting holes.

### OVERALL DIMENSIONS

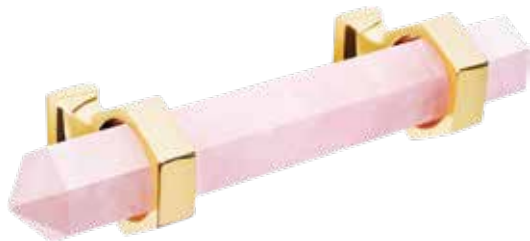
Height: 1"  
Width: 5.125"  
Depth: 1.5"  
Mounting holes 3" apart on center.

### MATERIALS

Amethyst (401)  
Clear quartz w/ inclusions (100)  
Horn – Light (HL) or Dark Variegated (HD)  
Howlite/Marble (732)  
Rose quartz (532)  
Smoky quartz w/ inclusions (301)

### FINISHES

Polished Brass (Unlacquered) (PB)  
Polished Chrome (PC)  
Polished Nickel (PN)  
Ask about other finishes.



### NOTE:

1" 8/32 mounting screws are included.  
5/64" hex key required to make adjustments on site; included.

\* Natural materials are unique and each stone is hand-selected. They vary slightly in size, color and texture.

68 E 131ST STREET, SUITE 607, NEW YORK, NY 10037

phone: (212) 678-8626

email: info@matthewstudiosny.com

website: www.matthewstudiosny.com