



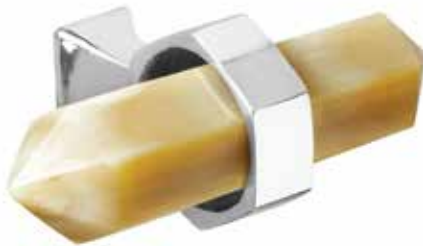
FREYA SMALL PULL LIGHT HORN (FKS-HL)



The Freya is an instant classic in rock crystal or horn. Hand-carved into a hexagonal shape and double-terminated with two soft points, each pull is banded in metal with an angular stanchion for an elegant and modern look. The Freya is designed to be used vertically or horizontally, and the mounting stanchions are also field-adjustable for perfect placement on pre-existing mounting holes.

OVERALL DIMENSIONS

Height: 1"
Width: 2.375"
Depth: 1.5"



MATERIALS

Amethyst (401)
Clear quartz w/ inclusions (100)
Horn – Light (HL) or Dark Variegated (HD)
Howlite/Marble (732)
Lapis Lazuli (LL1)
Malachite (800)
Rose quartz (532)
Smokey quartz w/ inclusions (301)

FINISHES

Polished Brass (Unlacquered) (PB)
Polished Chrome (PC)
Polished Nickel (PN)
Ask about other finishes.

NOTE:

1" 8/32 mounting screw is included.

* Natural materials are unique and each stone is hand-selected. They vary slightly in size, color and texture.
** All products are responsibly sourced and comply with U.S. Fish and Wildlife regulations



68 E 131ST STREET, SUITE 607, NEW YORK, NY 10037

phone: (212) 678-8626

email: info@matthewstudiosny.com

website: www.matthewstudiosny.com