



## HAYDEN LARGE KNOB ROSE QUARTZ (HKL532)



The Hayden Collection is inspired from vintage art deco cufflinks. Each crystal is carved into a rich sugarloaf cabochon and fit into a subtle chamfered square metal base for a tailored, handsome, plush, modern look.

### OVERALL DIMENSIONS

Height: 1.5"

Width: 1.5"

Depth: 1.7"

### MATERIALS

Amethyst (401)

Clear quartz w/ inclusions (100)

Lapis Lazuli (LL1)

Malachite (800)

Rose quartz (532)

Smokey quartz w/ inclusions (301)

Tiger's Eye (900)



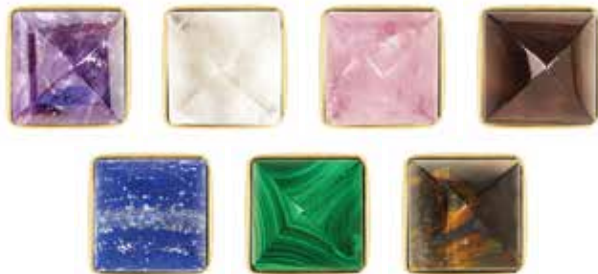
### FINISHES

Polished Brass (Unlacquered) (PB)

Polished Chrome (PC)

Polished Nickel (PN)

Ask about other finishes.



### NOTE:

1" 8/32 mounting screw is included.

\* Natural materials are unique and each stone is hand-selected. They vary slightly in size, color and texture.

68 E 131ST STREET, SUITE 607, NEW YORK, NY 10037

phone: (212) 678-8626

email: [info@matthewstudiosny.com](mailto:info@matthewstudiosny.com)

website: [www.matthewstudiosny.com](http://www.matthewstudiosny.com)